

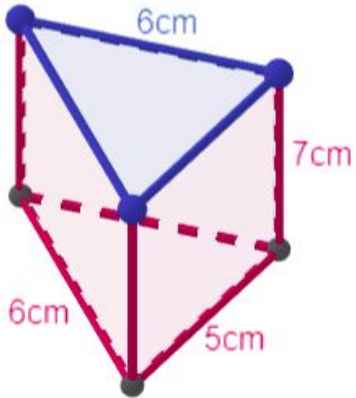
Name:

Block:

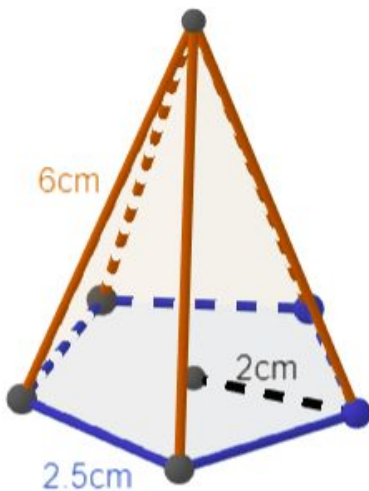
Surface Area 3 - Nets and Surface Area

Draw proportional nets for the following shapes. Appropriate measurements should be included for each side-length, with hash marks to indicate equal side-lengths. Then, compute the surface area of each shape to one decimal place. You will have to use the Pythagorean Theorem.

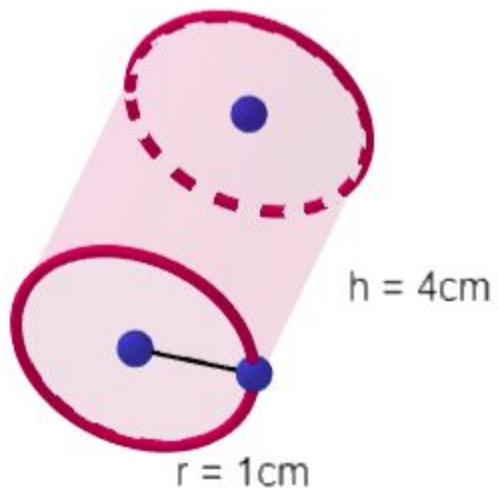
(triangular prism)



(regular pentagonal pyramid) Label all sides properly!



(cylinder)



(prism) Pay attention to the side-lengths!

